



■ Form 1 : with VCI

- Easy Programming via VCIs.
- A VCI supports only one match to ensure safe use.
- Offline dealers or locksmiths can provide technical support.

■ Form 2 : without VCI

- Professional and convenient pairing through the dealer or locksmith without owning a VCI.
- For models that do not support Easy Programming , dealers or locksmiths can use professional tools to complete the watch programming



Users: car owners

- **No worry about leaving your keys behind:** The car key at home or in the car, sometimes even unable to find it, the Smart Vehicle key can solve this problem;
- **Add a key:** If the original car key is lost, instead of getting an expensive new key from the 4S store or locksmiths, our smart vehicle key can back you up.

Target users: Locksmiths

- **Increase income:** When a customer loses a key and comes to match the key, recommend the customer to pair a Smart Vehicle Key as backup, which can also increase your income;
- **Customer diversion:** Car owner can purchase or pair a smart watch via a locksmith, which will attract customers for the locksmith, increase his locksmith income.

Target users: auto repair shops/auto detailing stores

- **New form of keys (repair shops):** recommend to customers who come to repair shops to obtain a new form of keys, increasing the income of auto repair shops;
- **Car beauty store:** Introducing two-in-one device (smart watch & smart vehicle key) car supplies increases the income of the car beauty store after purchase;

Target users: car dealerships/car OEMs

- **Car gifts (4S stores):** Attracting customers with the Smart Watch as a gift can increase car sales.
- **Customized smart watches (car OEMs):** As a new form of product and future trend, the Smart Watch can be used to as a way of attracting customers to buy cars.

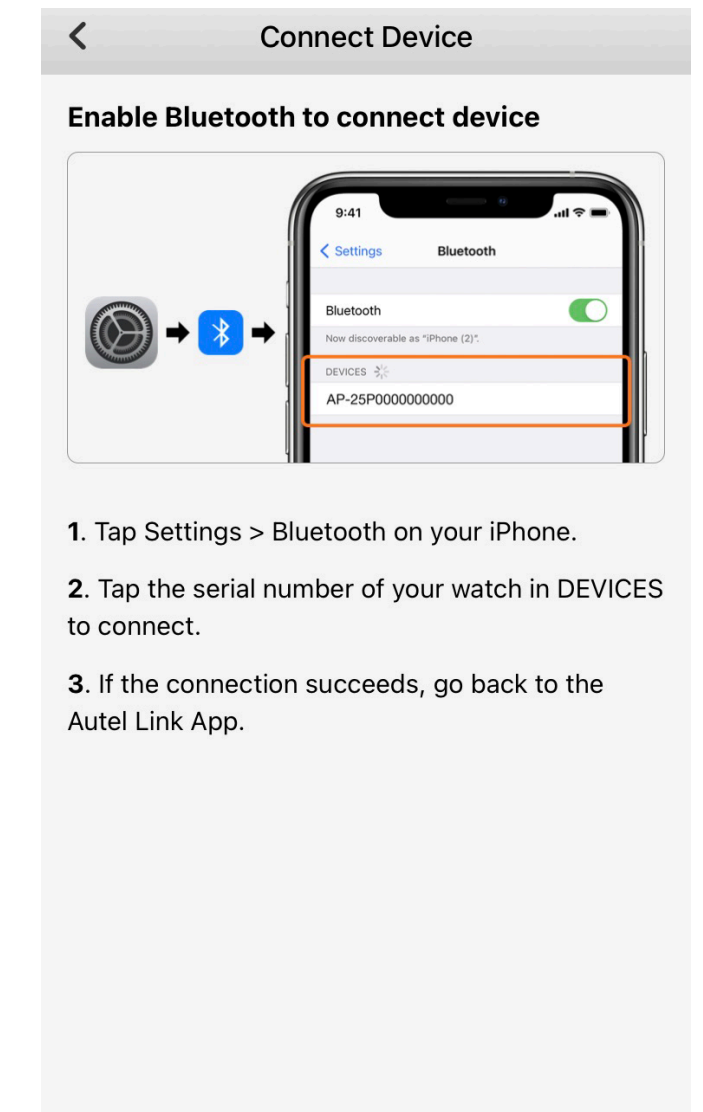
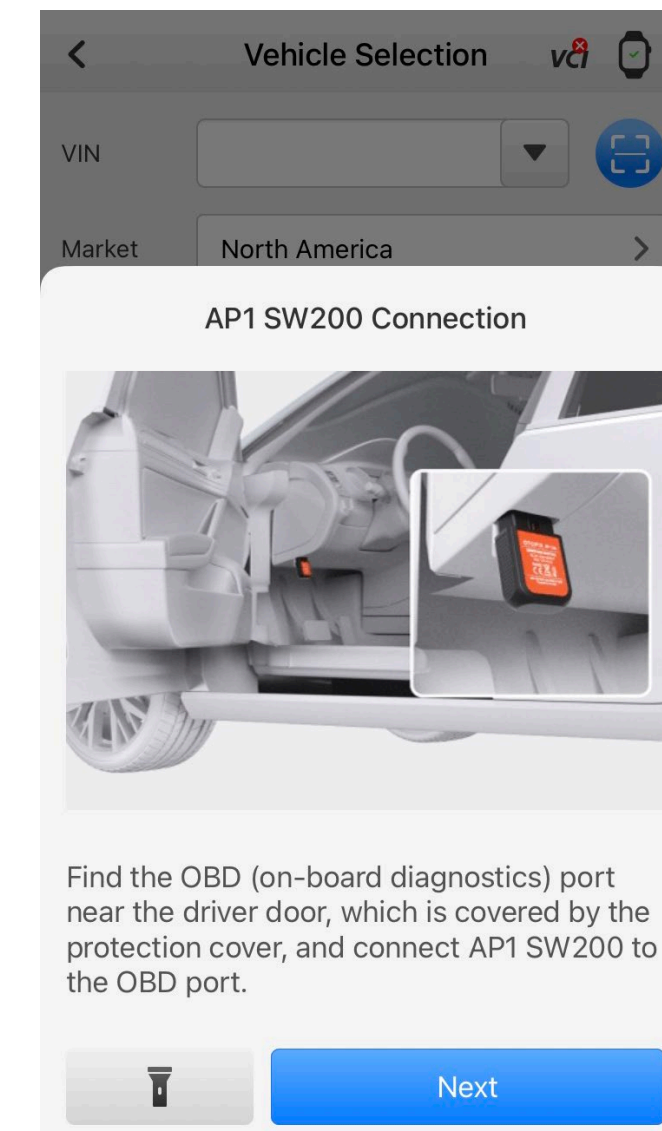
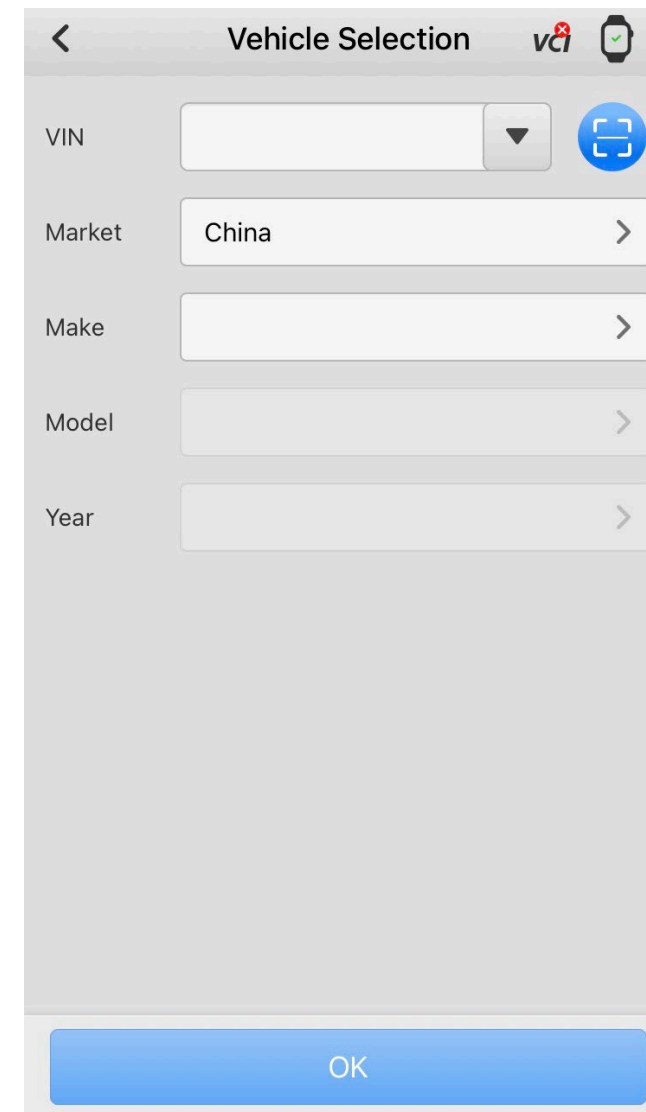
- **Easy programming, supports 80% of the mainstream models of smart keys**
 - Compatible with most U.S., Asian, and select European vehicles;
 - Easy-to-use setup APP ;
- **Smart Key Functions**
 - Mimics Key FOB and Smart Key Functions including Remote Start, Door, and Trunk Lock/Unlock
 - Embedded chip with encrypted key data
 - App-based lock-out feature in the event that the watch is lost or stolen
- **The intersection of style and cutting-edge technology**
 - AMOLED HD touchscreen with sculpted beveled glass
 - Simple, Easy-to-Use User interface
 - Receive calls, read messages and listen to music with Bluetooth connection to phone
 - Hands-free vehicle infotainment system control via phone
- **Exercise and health management functions**
 - 12+ Sports Modes including Running, Walking, Stationary Cycling, Hiking and Yoga;
 - Health Monitoring: Heart Rate, Pulse Ox, Sleep;
 - Breath Training and Stand Reminder

Function		OTOFIX Watch	*WEI GT2	LEXE (VV**)	K*D*
Hardware	Size	1.78 inches	46 mm	46 mm	46 mm
	LCD type	AMOLED	AMOLED	TFT LCD	TFT LCD
	Resolution	454*454	454*454	360*360	254*254
	Processor	Apollo4	Kirin A1	/	/
	Battery life	4 days (The key tool can continue to be used for 5 days after the watch is turned off due to lack of power)	2 weeks	2 weeks	/
Key functions	Easy programming	√(with VCI)	x	x	x
	Voice control	√	x	x	x
	Remote distance	40 m	x	40 m	20 m
	Smart unlock	√	x	√	√
	Smart start	√	x	√	√
Basic functions	Incoming call alert	√	√	√	x
	Bluetooth call	√	√	x	x
	Message notification	√	√	√	√
Health functions	Heart rate	√	√	√	√
	Sleep monitoring	√	√	√	√
	SpO2	√	√	x	√
	Breath training	√	√	x	x
	Stand reminder	√	√	x	x
Others	GPS	√	√	√	x
	Weather	√	√	√	x
	Compass	√	√	x	x
	Barometric altimeter	√	√	x	x
	Music player	√	√	x	x
	Waterproofness	IPX8	5ATM	IP67	IP67
Sports functions	Exercise	12+ sports modes	12+ sports modes	Steps	Steps
Price	\$	Around \$200	Around \$180	/	/

Easy Programming

App guides owners for Easy Programming with the vehicle without locksmith, owners can pair the watch with the vehicle by themselves through the product pairing VCI + Autel Link app, covering 1000+ models with minimal pairing and DIY stress-free.

Support VW, BMW, Honda and other brands, covering 80% of mainstream smart key models

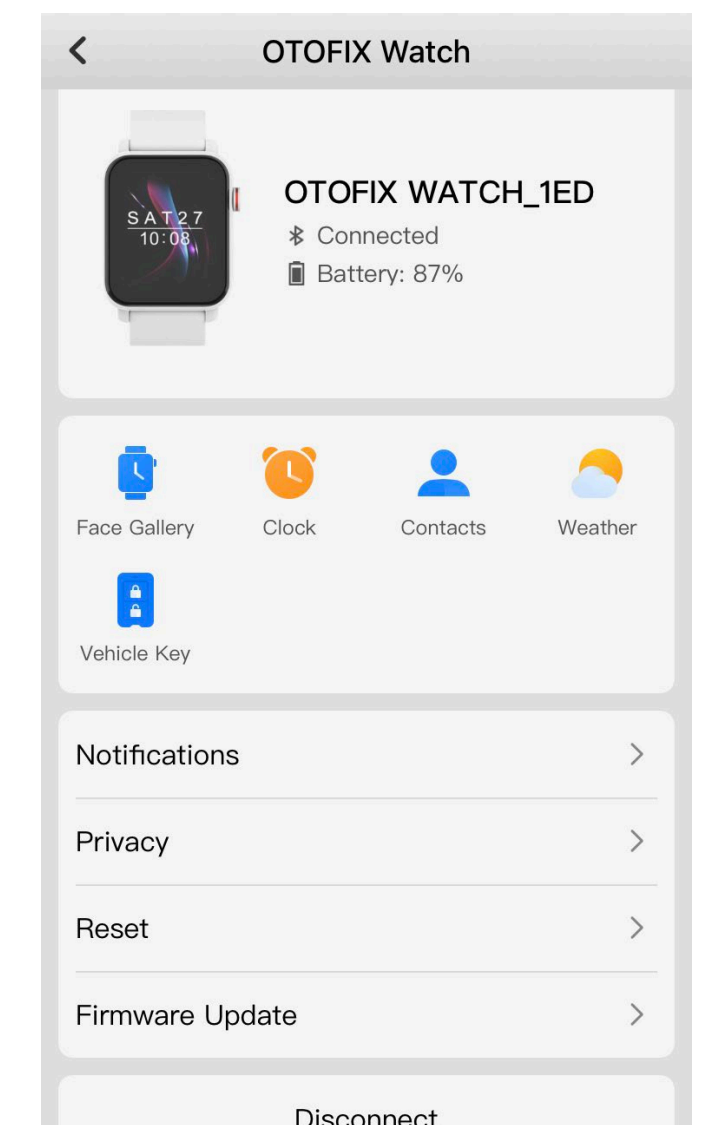
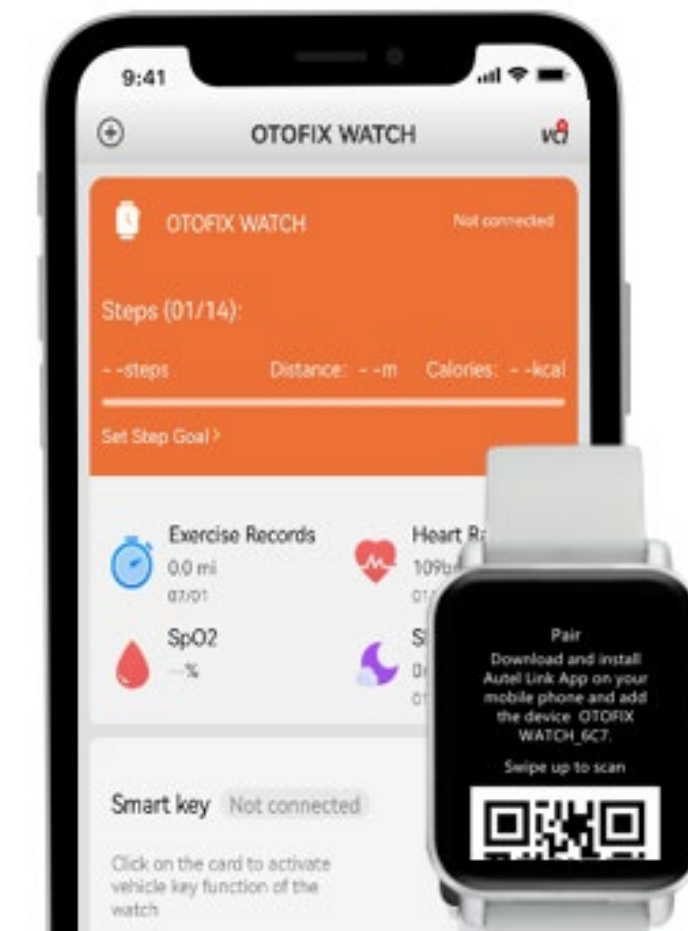


1. Tap Settings > Bluetooth on your iPhone.
2. Tap the serial number of your watch in DEVICES to connect.
3. If the connection succeeds, go back to the Autel Link App.

Autel Link

The Smart Watch is connected to Autel Link app via Bluetooth, which supports Android users and IOS users

After pairing the Watch to your mobile device through the Autel Link app, you can view functions for the Watch in the Autel Link app, including: Face Gallery, Music, Alarm, Contacts, Weather, and Vehicle Key.



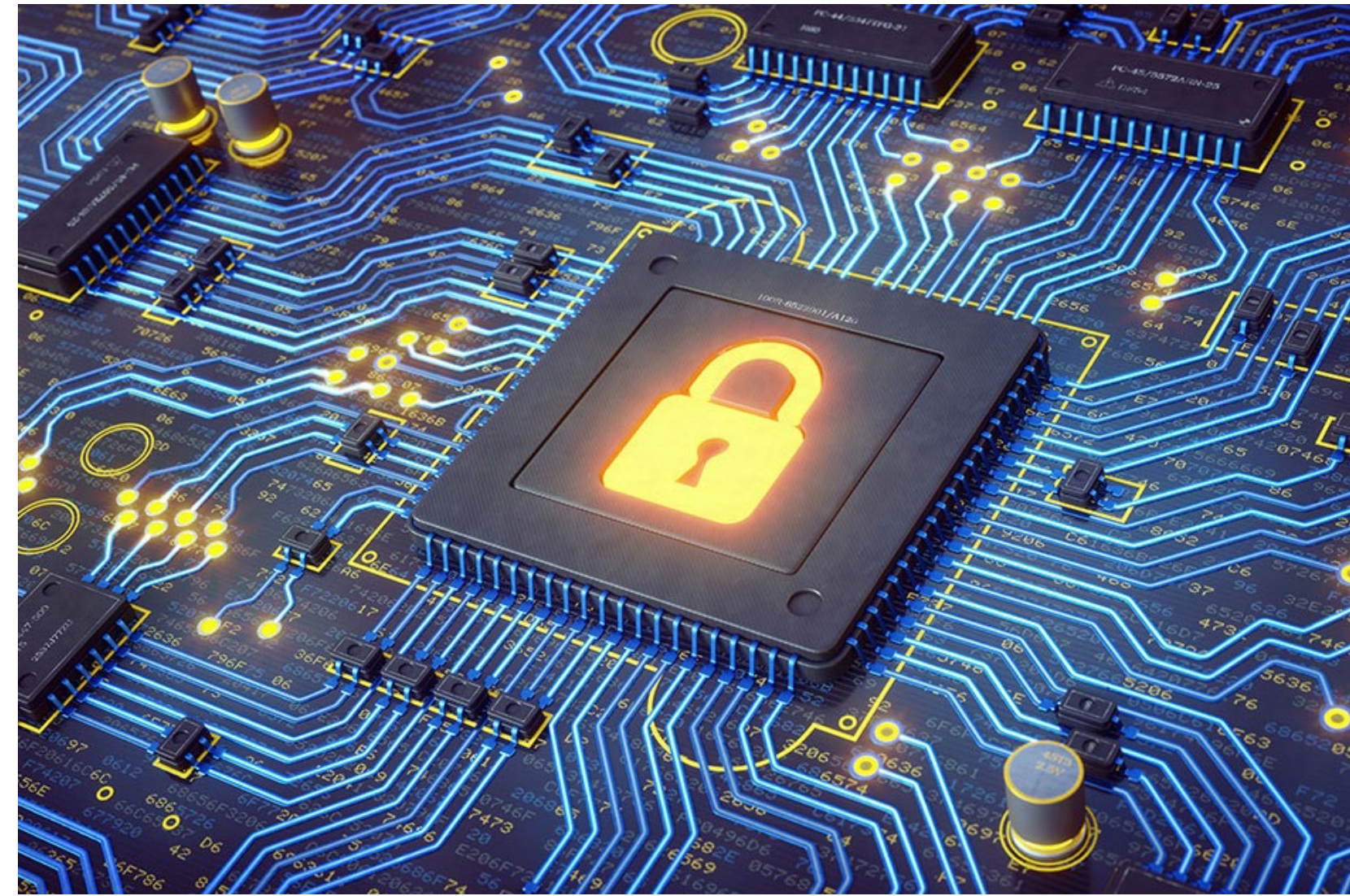
The Easy Programming covers more than 1000+ models and is equipped with an encryption chip for safety and security

Model Coverage

Brand: BMW, Audi, VW, JLR, Skoda, Honda, Nissan, Mazda, Hyundai, Kia, GMC, Ford, Fiat, BYD, Great Wall and other 67 brands;

Support for Easy Programming models: 1054 model years, accounting for 80% of supported models

Models that need to be programmed by the programming tool : 255 model years, 20% of the supported models



Anti-theft and anti-loss

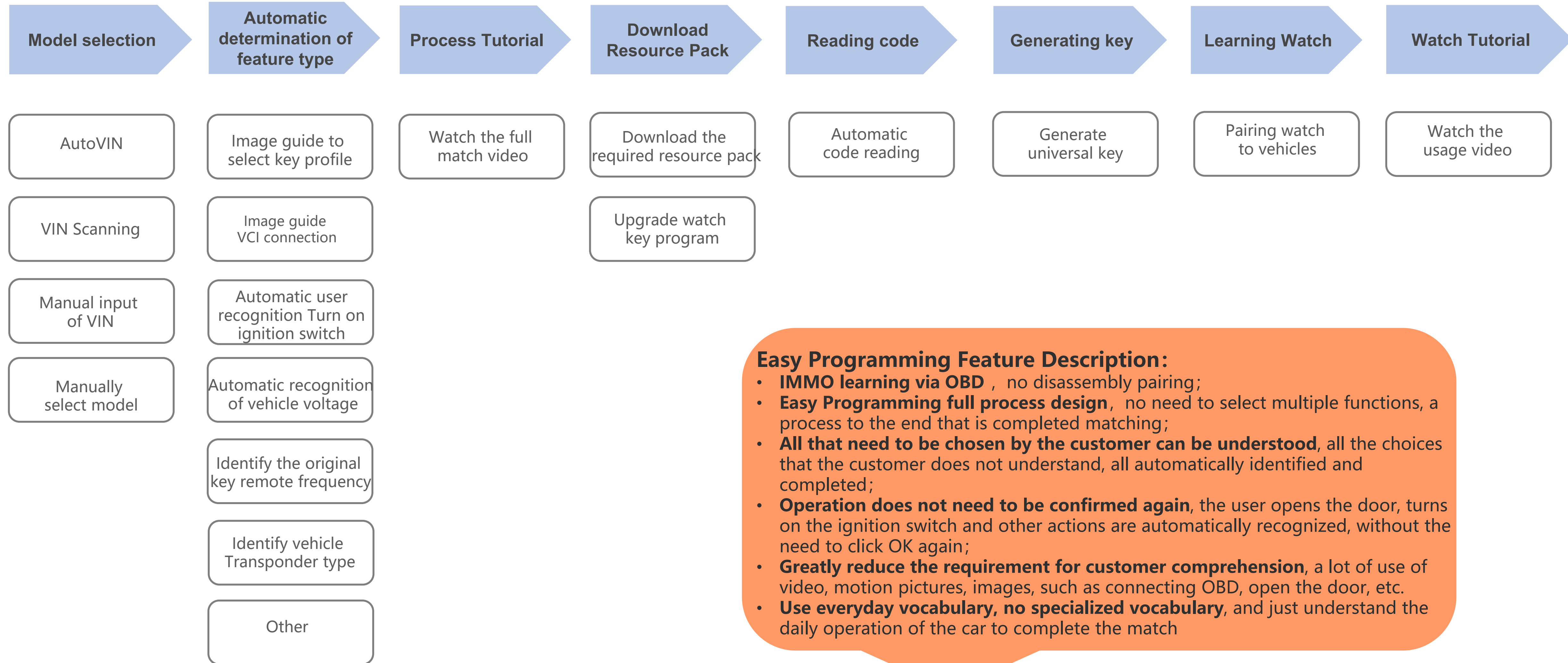
Equipped with encryption chip, local encrypted storage of key data, self-locking when the watch is lost, safe and secure.

If you use a passcode, the wrist detection feature locks the watch when you take it off to keep your information safe.

Smartwatch model coverage list:



List



Easy Programming Feature Description:

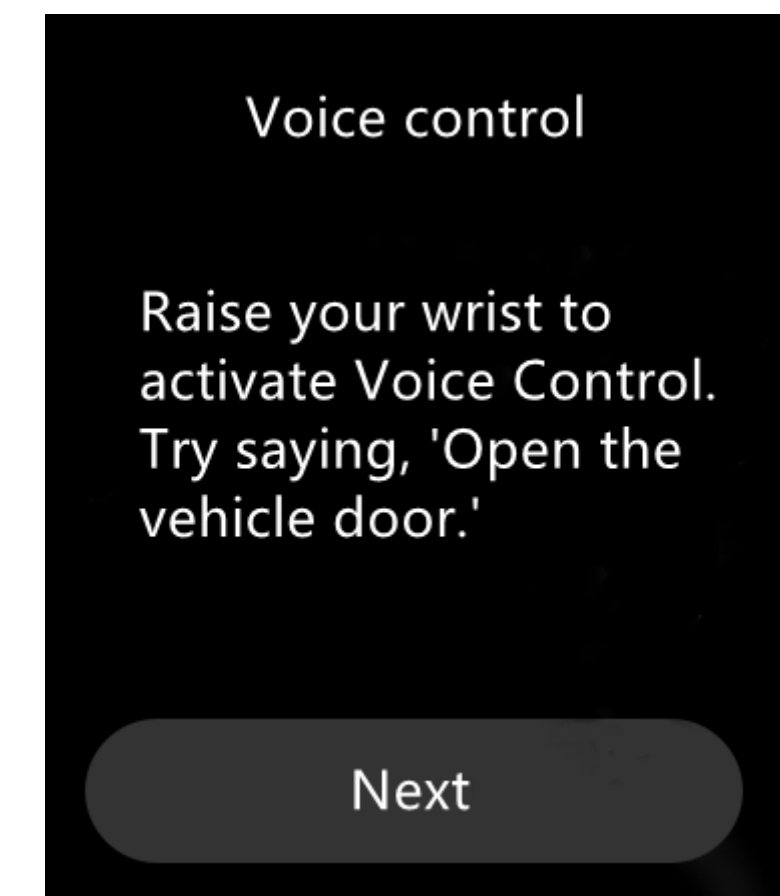
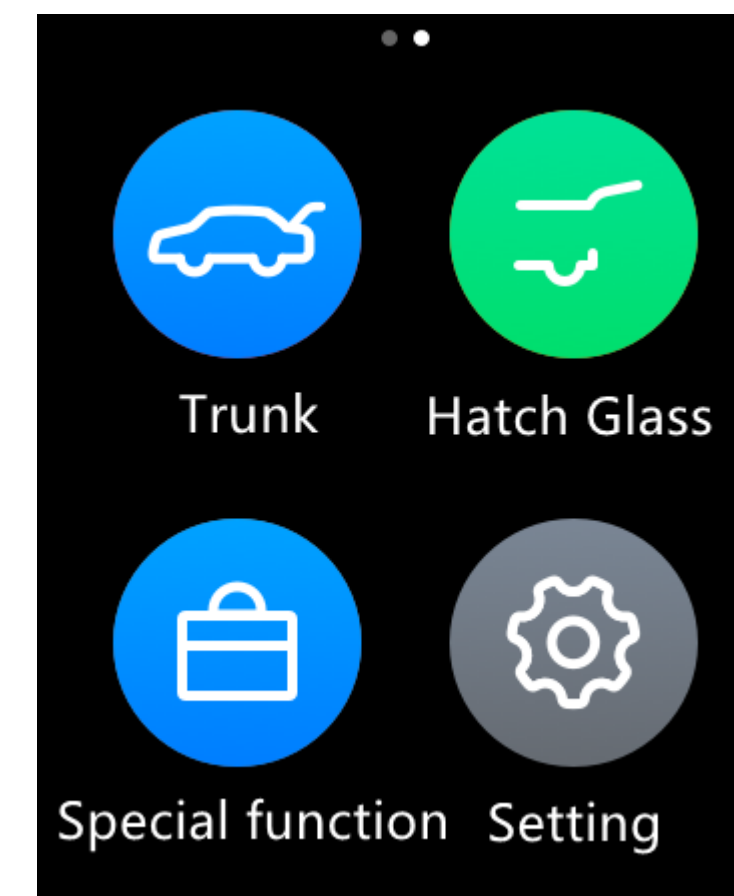
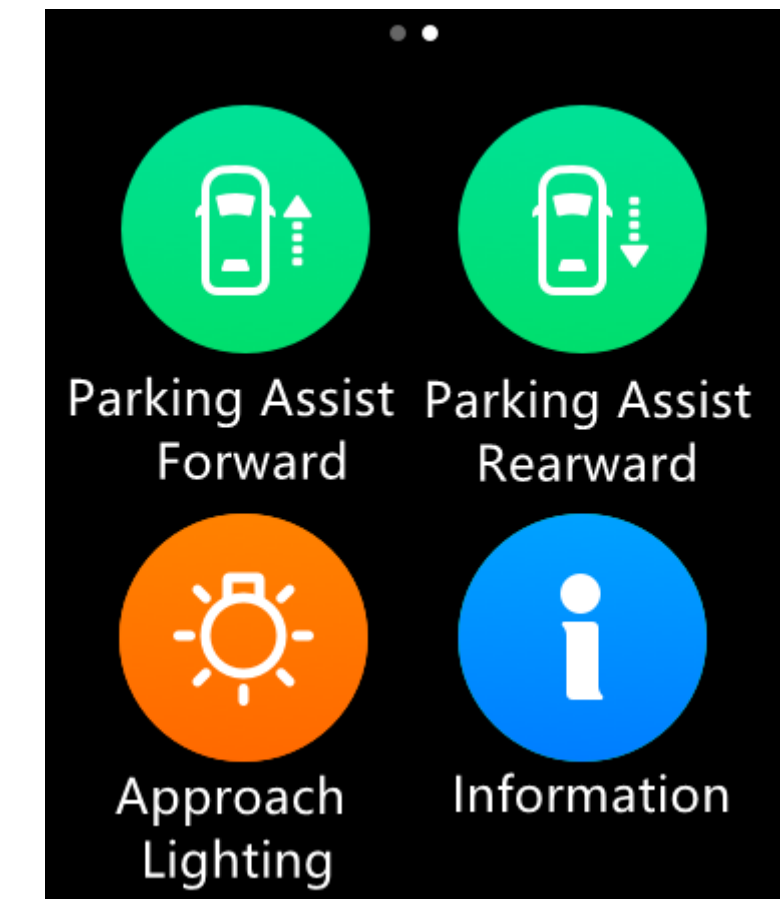
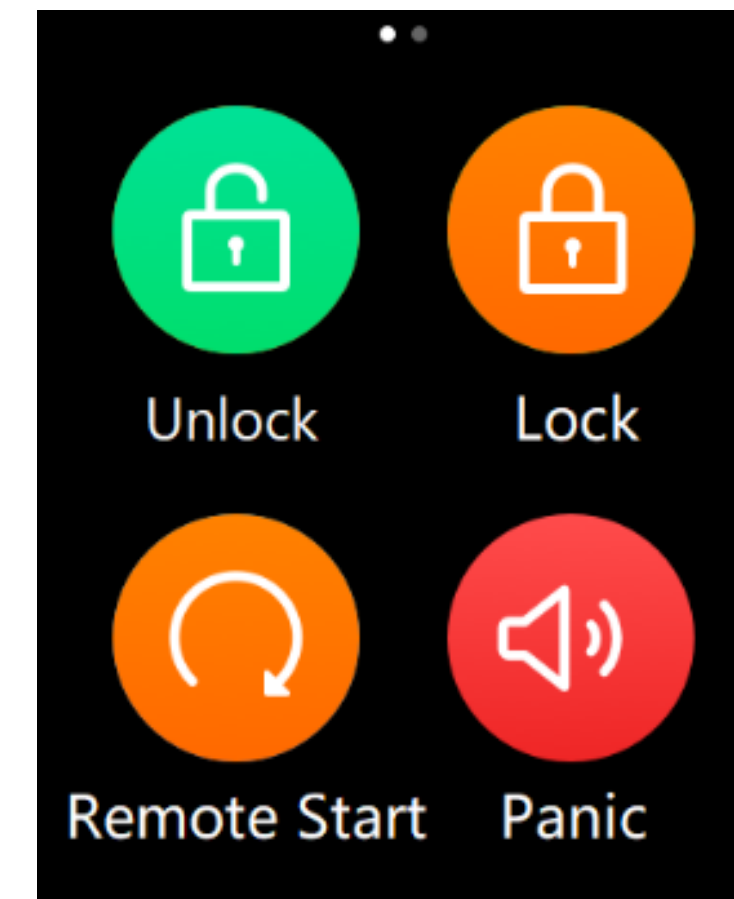
- **IMMO learning via OBD** , no disassembly pairing;
- **Easy Programming full process design** , no need to select multiple functions, a process to the end that is completed matching;
- **All that need to be chosen by the customer can be understood**, all the choices that the customer does not understand, all automatically identified and completed;
- **Operation does not need to be confirmed again**, the user opens the door, turns on the ignition switch and other actions are automatically recognized, without the need to click OK again;
- **Greatly reduce the requirement for customer comprehension**, a lot of use of video, motion pictures, images, such as connecting OBD, open the door, etc.
- **Use everyday vocabulary, no specialized vocabulary**, and just understand the daily operation of the car to complete the match


Smart Vehicle Key Function

Support one-touch car locating, unlocking/locking doors, raising/lowering windows, and opening the tailgate;

Support voice control, use the corresponding voice recognition words to achieve voice control over the car key function, completely free your hands.

Voice Control Keywords	Description
Open the door	Unlock the vehicle.
Close the door	Lock the vehicle.
Open the trunk	Unlock the trunk.
Start the engine	Start the vehicle engine.
Open the garage door	Raise up the garage door.
Close the garage door	Lower the garage door.
Pause the garage door	Stop the garage door in mid-motion.
Raise the parking lock	Lock the parking lock.
Put down the parking lock	Unlock the parking lock.



 **1.78 inches AMOLED HD full touch screen**
AMOLED HD full touch screen with simple UI design, 3D curved glass, with beveled sculpture and precision grinding process technology to bring extraordinary experience.



Call Functions via Bluetooth

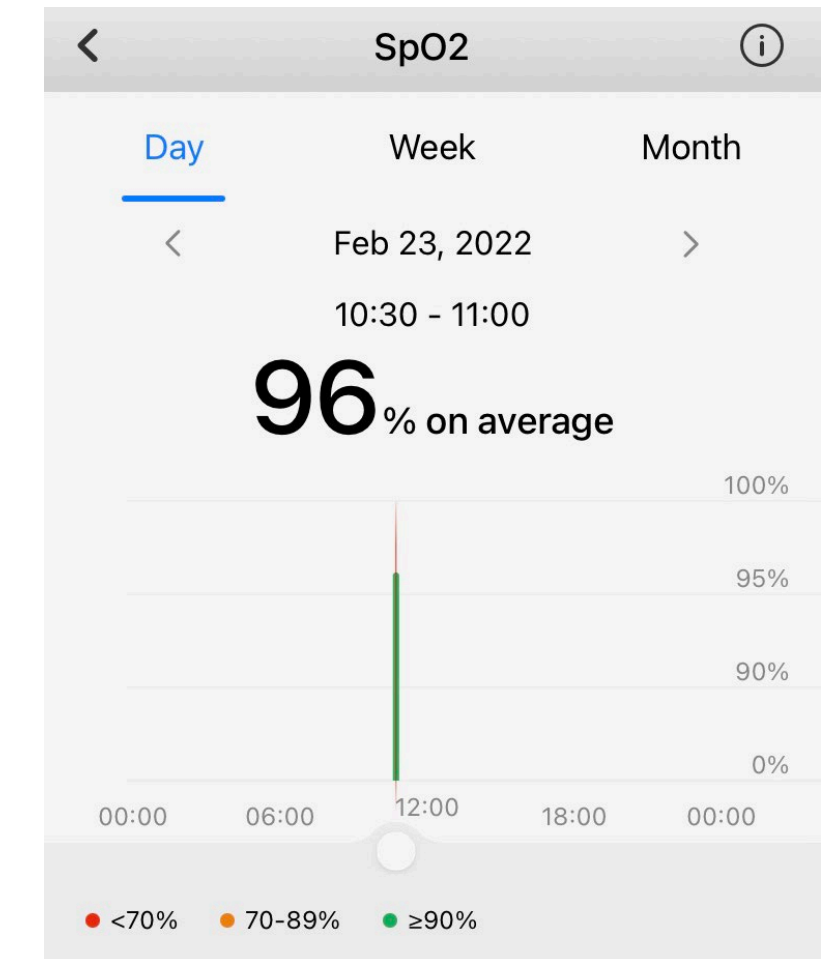
When the Watch is connected to the mobile device and you receive a call, the Watch vibrates and displays the caller's number and name. You can choose to answer or reject the call.

Whether you are in sports or driving, you won't miss any important call, make a convenient call, and speak freely.

Monitoring Blood Oxygen Level

Oxygen saturation levels (SpO2) is a measure of the ability of the blood to carry oxygen, and is the percentage of the volume of oxygen and hemoglobin bound in the blood to the total hemoglobin volume, i.e. the concentration of oxygen in the blood, and is an important physiological parameter of the respiratory circulation. Normally, oxygen saturation should be 95%-100%, with lower values representing higher risk.

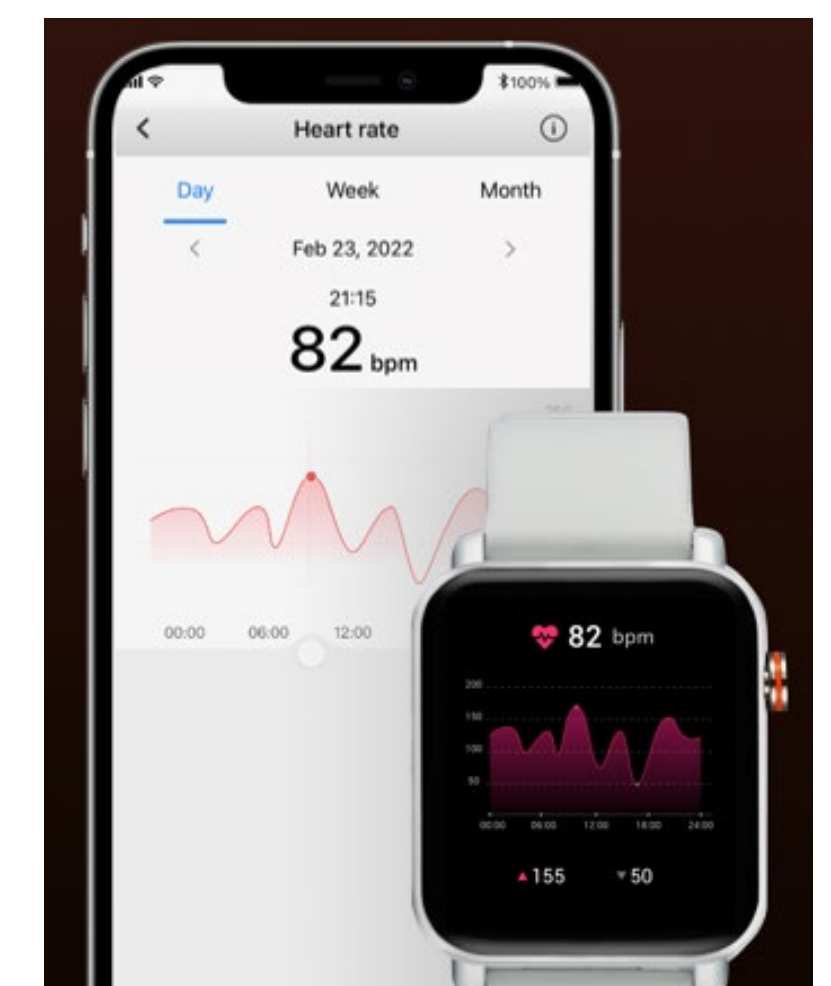
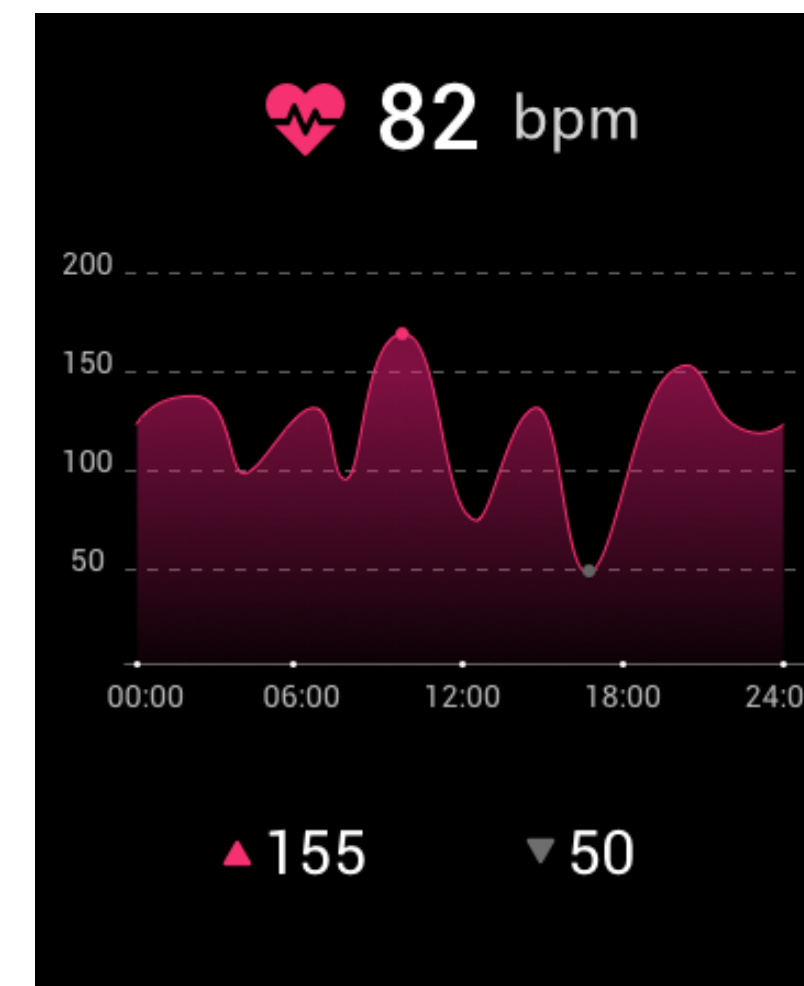
The watch supports blood oxygen measurement range of 70%~100%, detecting blood oxygen value on the go and mastering body changes.



Monitoring Heart Rate

Heart rate is the speed of the heartbeat measured by the number of contractions (beats) of the heart per minute (bpm). The normal resting adult human heart rate is 60–100 bpm, the ideal heart rate should be 55-70 beats per minute.

Provide 24-hour heart rate health check, understand the change curve of heart rate and record your every heartbeat.



Monitoring Sleep

The Watch automatically detects the moment you fall asleep, enter a light or deep sleep state, and wake up while wearing the Watch. Your sleep data is synchronized with the Autel Link app.

Monitoring Sleep can accurately analyze wakefulness, light sleep, and deep sleep to help you understand sleep scientifically in order to improve sleep quality.

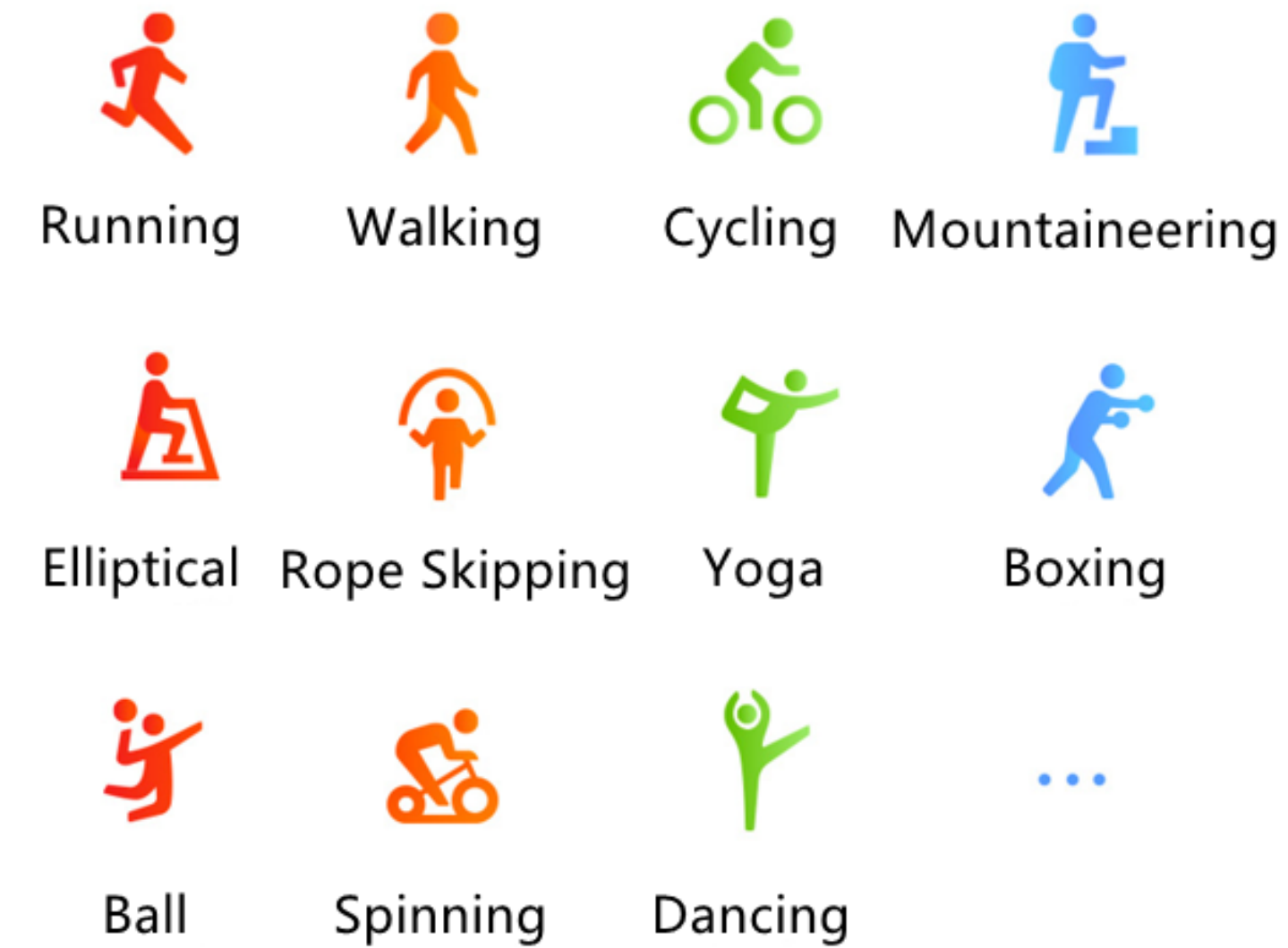


Breath Training

Breathing training is a method to obtain physical and mental relaxation by controlling the frequency and depth of one's breathing through certain exercises. Breath training helps you relax in a stressful situation and improve your mood.

Breathing training relaxes you during your stressful work or life, soothes you and makes life easier and more relaxing.





Exercise Record

The Smart Watch can record a variety of fitness data, including walking, running, cycling, rowing, climbing, rope skipping, yoga, boxing, and dumbbell routines. You can choose a fitness routine according to different scenarios. In addition, you can also customize fitness training goals.

50+ exercise options, with professional exercise algorithms, accurate detection and analysis of heart rate, exercise duration and consumption, to help you improve exercise efficiency.

The Smart Watch will record daily exercise data and summarize it to form weekly exercise data and analyze the status of weekly exercise goal achievement. So that you can understand the exercise status or adjust the appropriate exercise goals.

Other Functions

The Watch displays weather information of your current location;

After the Watch is successfully paired with a mobile device via the Autel Link app, the Watch will vibrate to notify you when a new message is displayed on the mobile device.

The Watch uses the GPS data to track movement during outdoor exercises such as running, walking, cycling, and mountain climbing.

The Watch can play saved music and music on the mobile device after the Control music in mobile phone via watch function is enabled on the Autel Link app. (The music feature is only available with Android mobile devices)

Support alarm clock, stopwatch, calculator, altitude barometer, compass and other gadgets, accurate display data, creating your personal life assistant.

