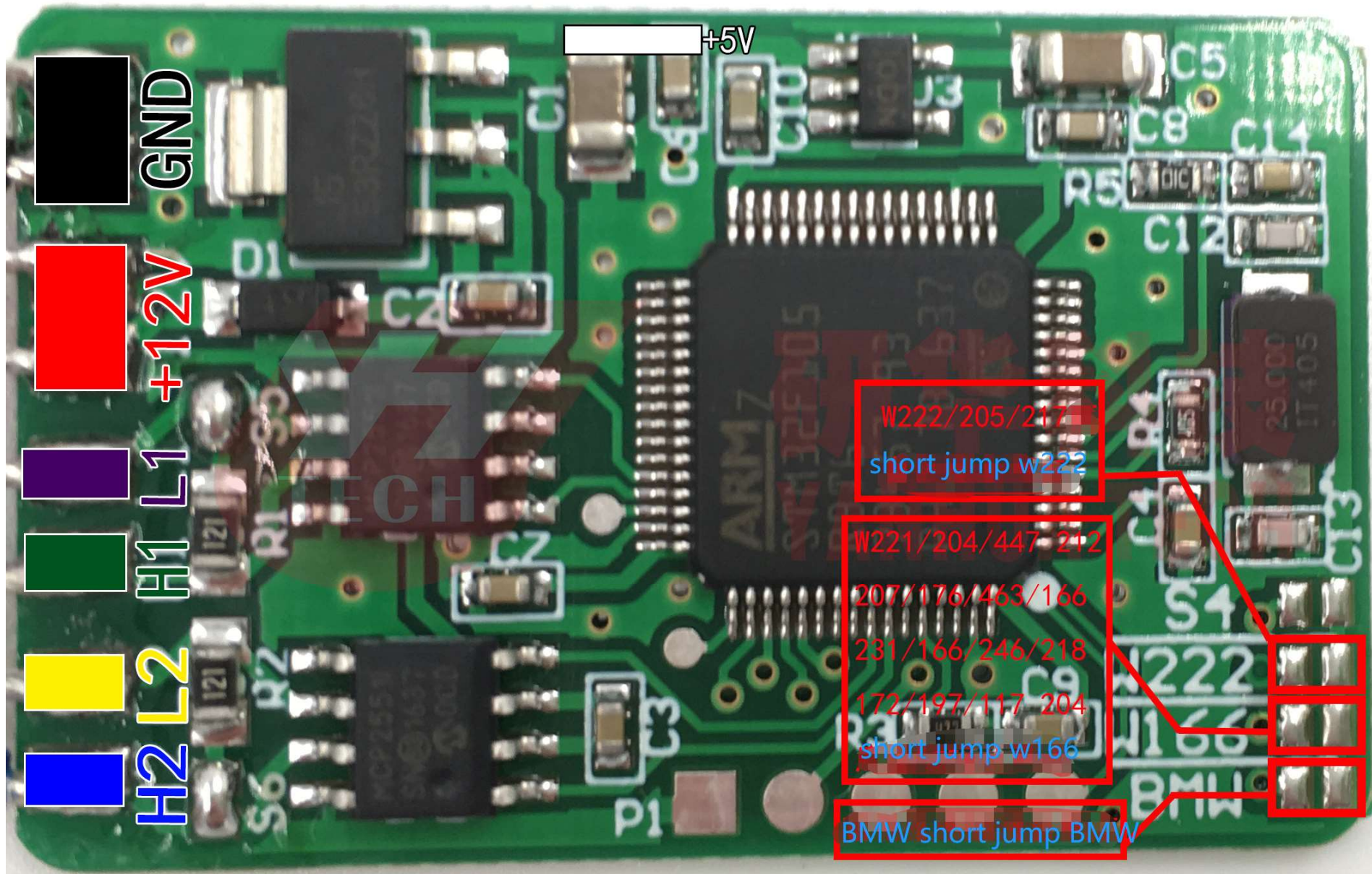
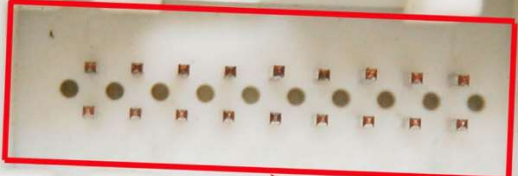


1. For Mercedes Benz

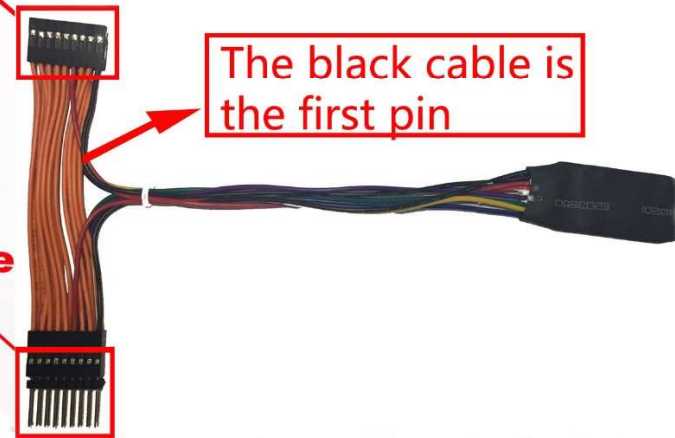


This M-Benz canfilter should be added to car after odometer adjustment for most chasis model, EXCEPT for W222/205/447, those 3 chasis models should add canfilter before odometer adjustment.

**S (W222) C (W205) V (W447)
S (W221) C (W204) E (W212)
E (W207) A (W176) G (W46)3
ML (W166) SL (R231) GL (X166)
B (W246) CLS (W218) SLK (R172)
SLS (W197) CLA (W117) GLK (X204)**



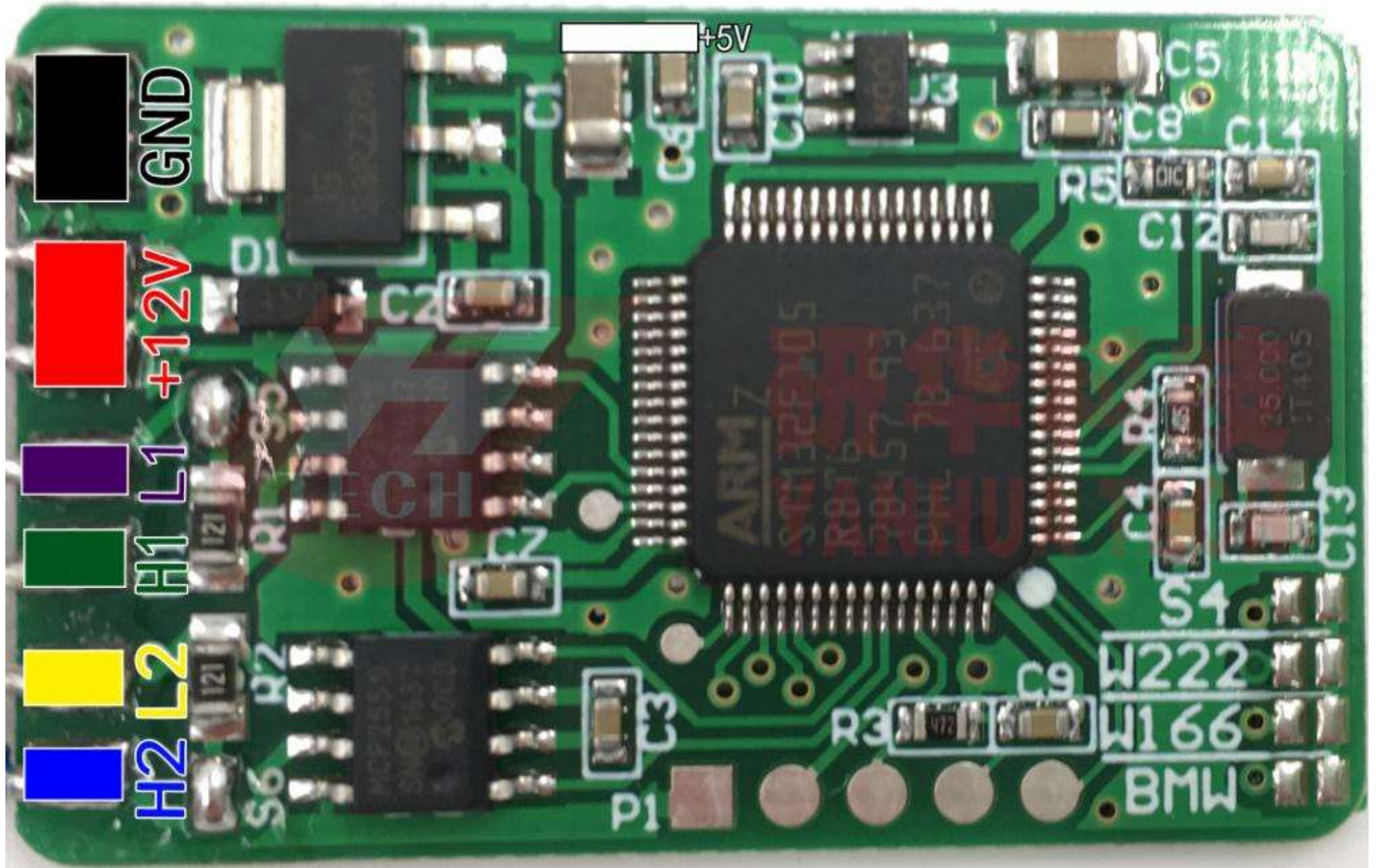
insert



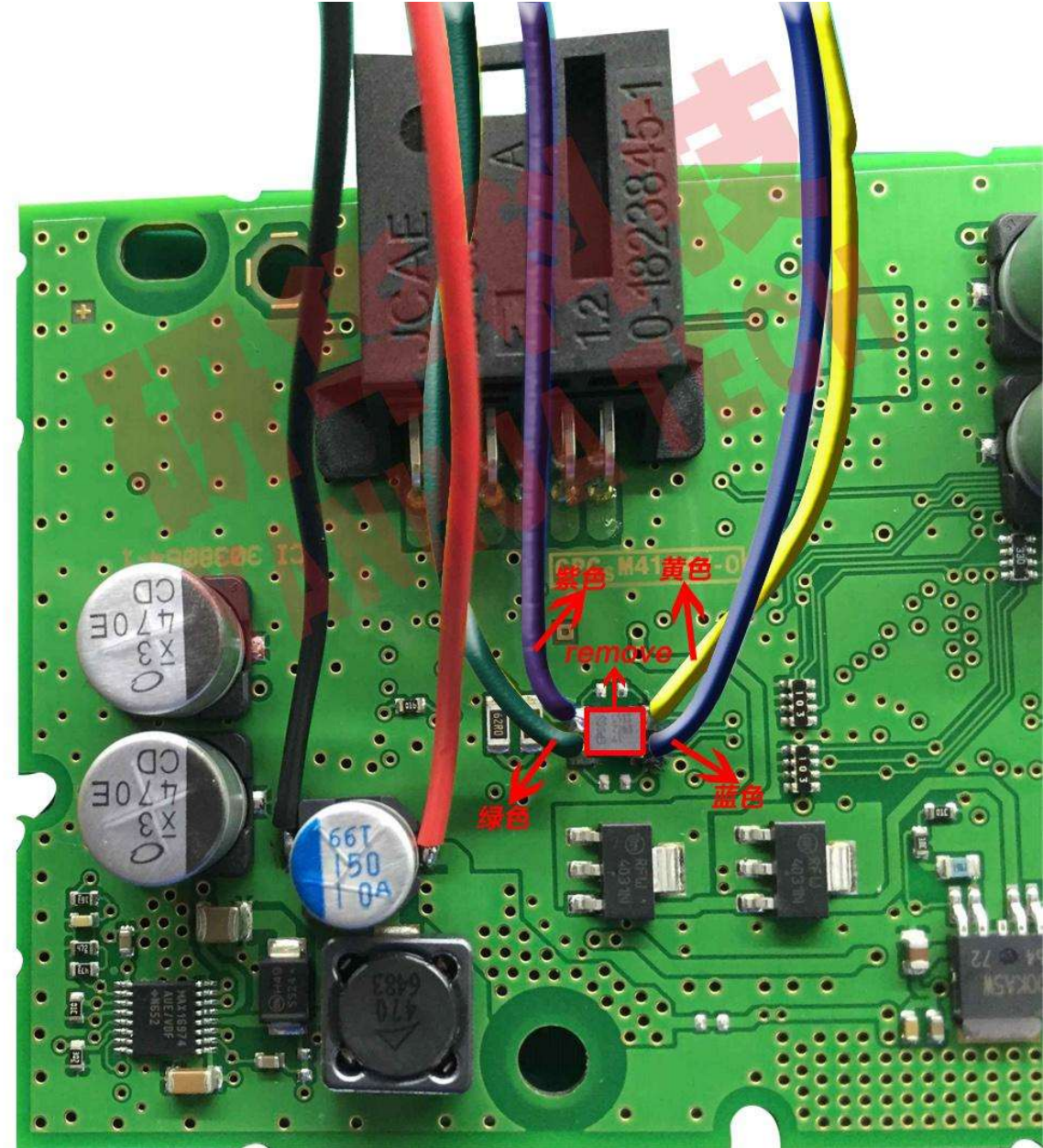
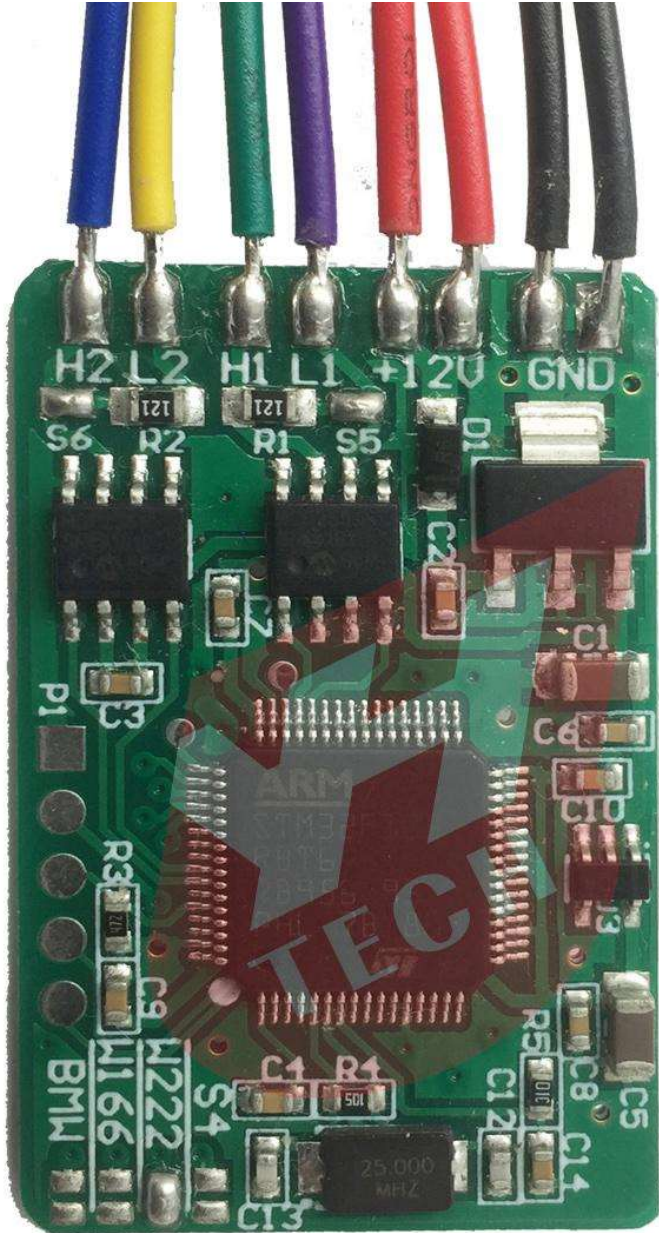
The black cable is the first pin

connect socket from the car

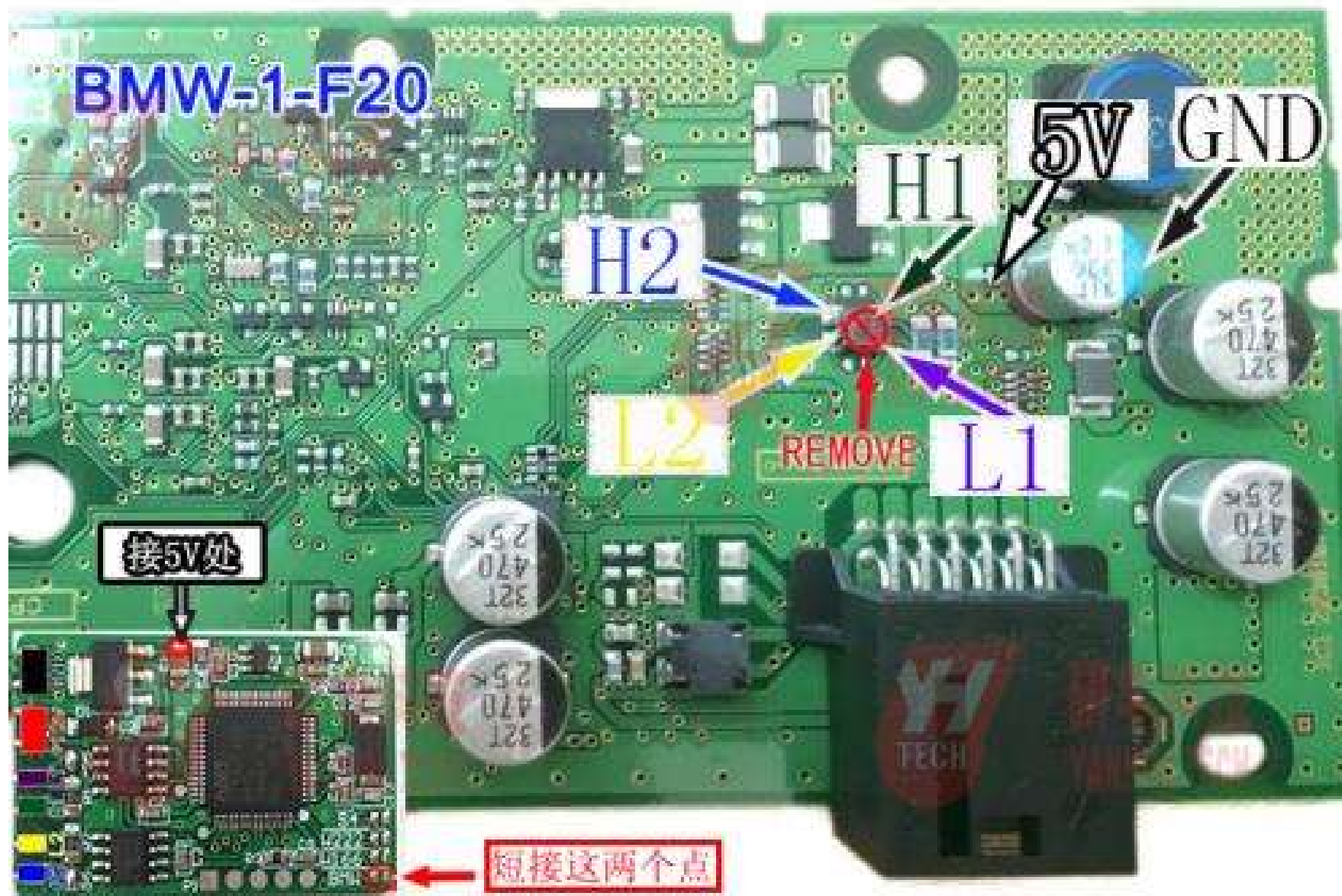
2. BMW should short joint the BMW points



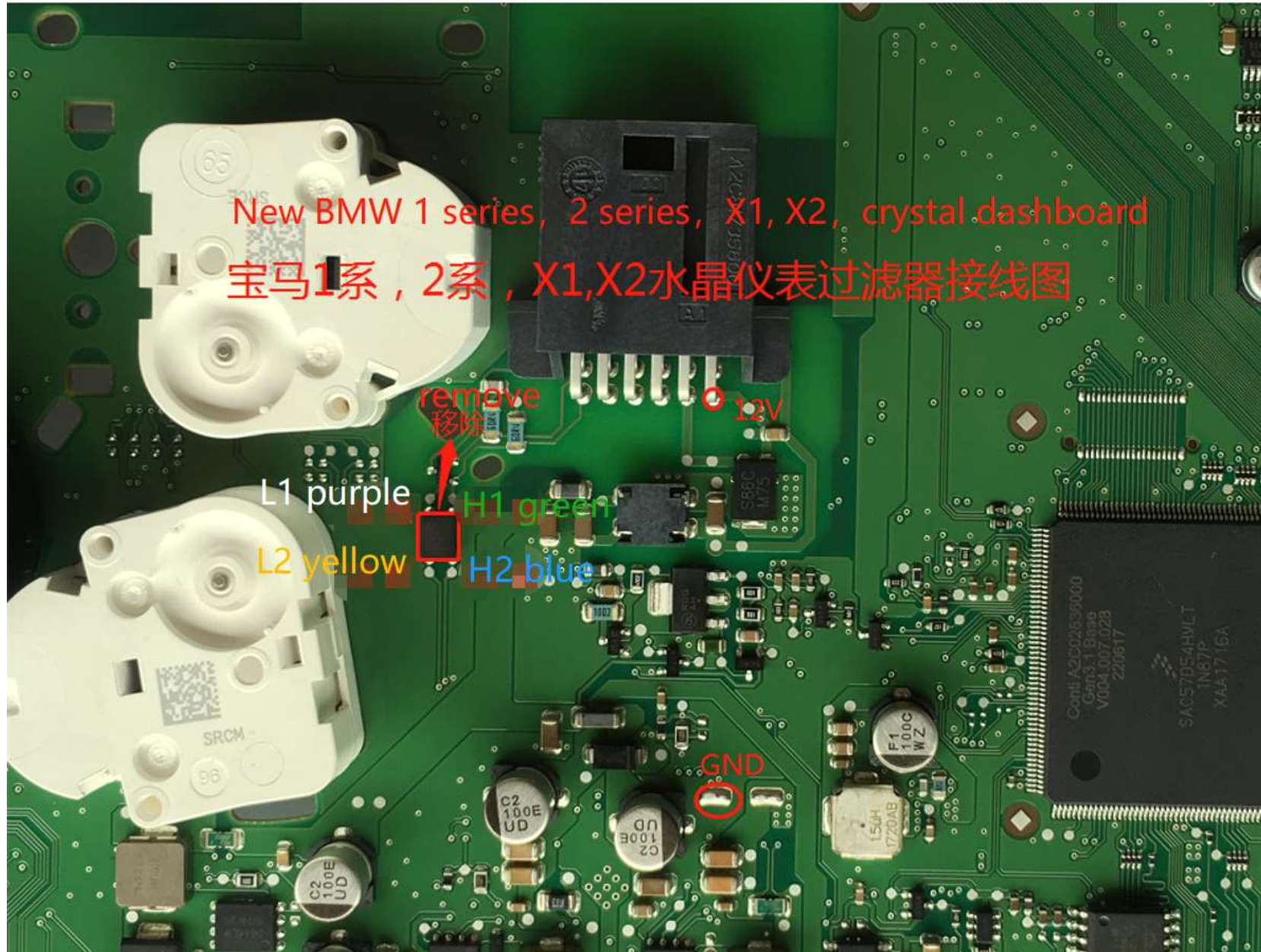
2.1BMW X1



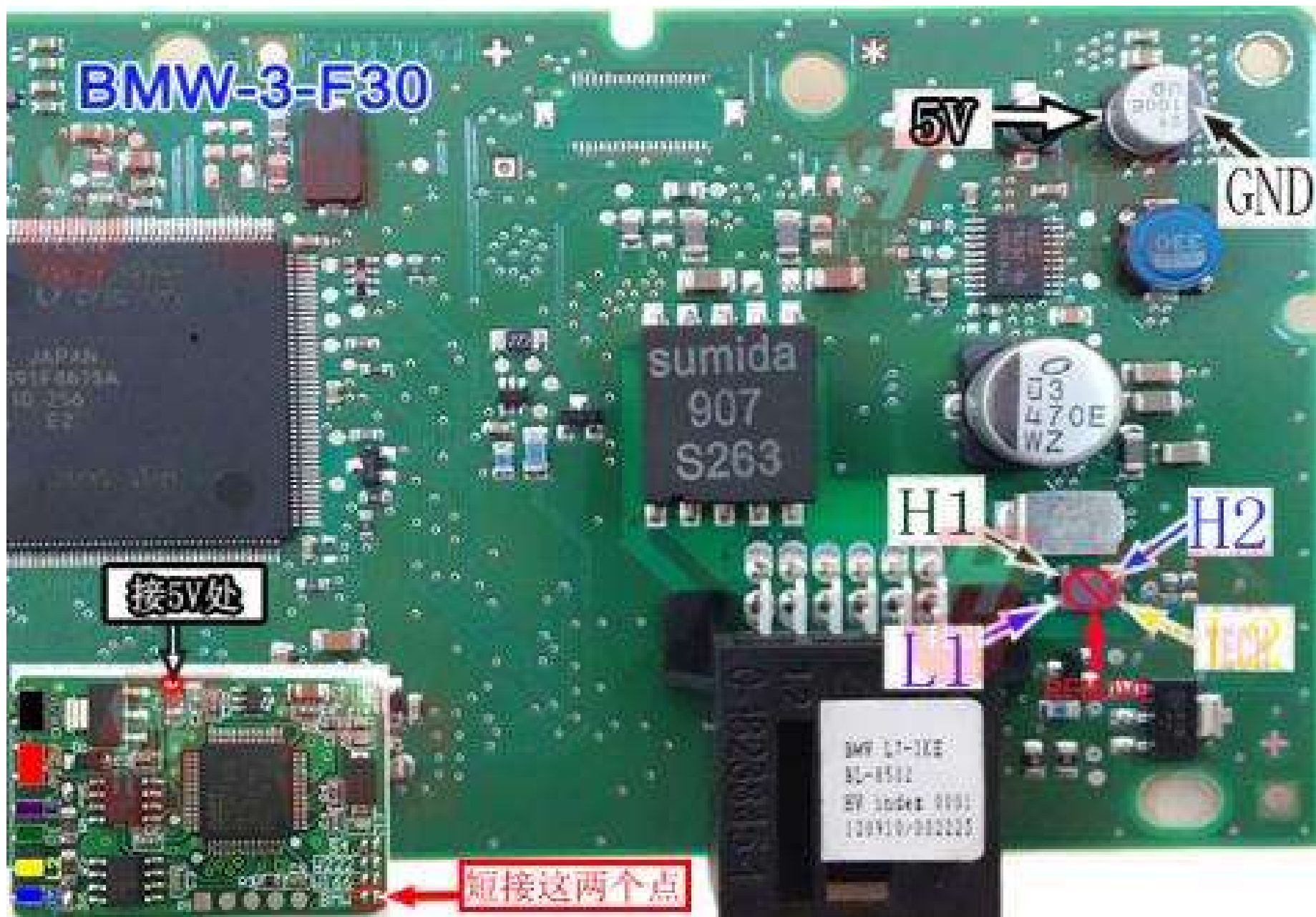
2.2BMW 1 series F20



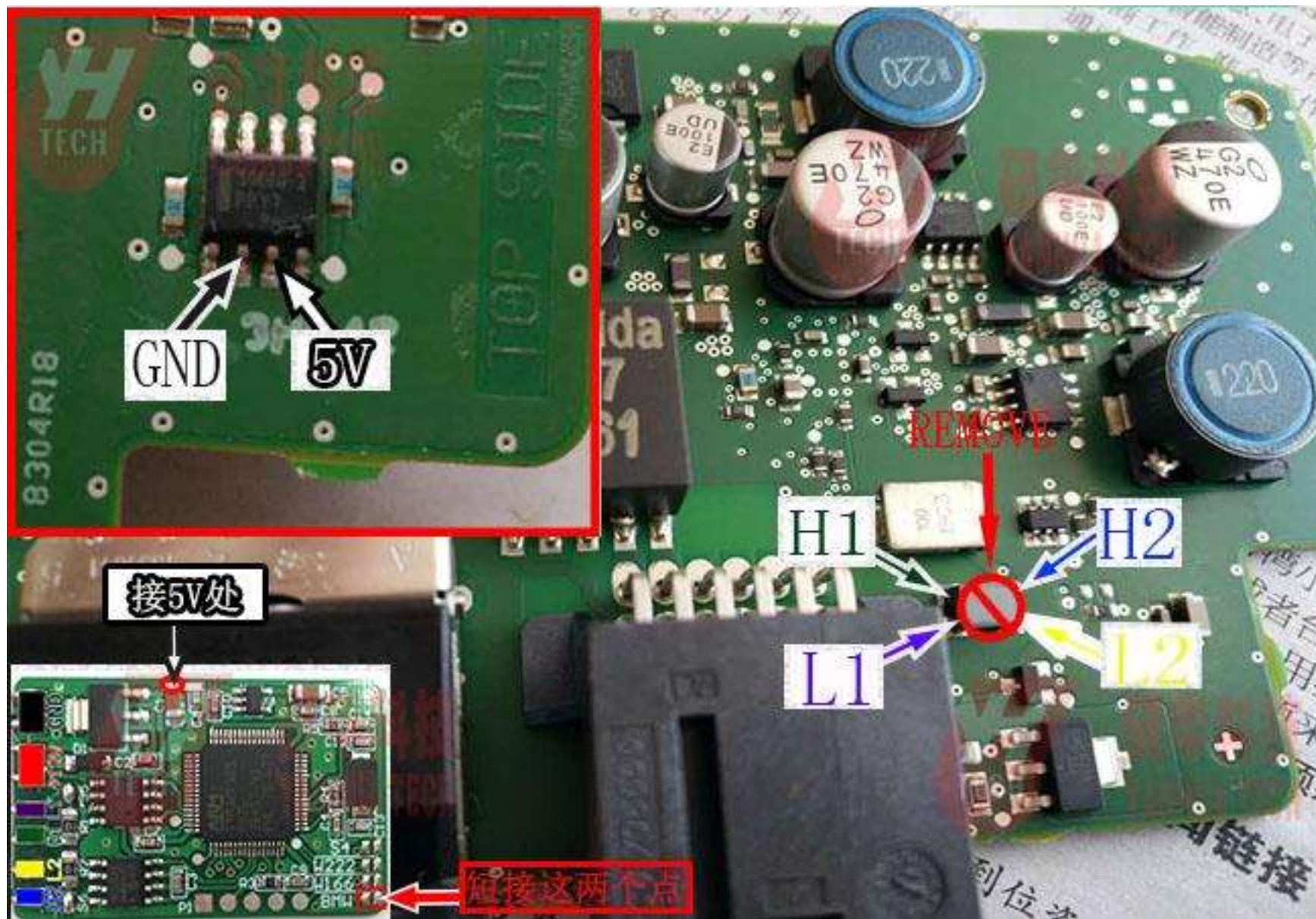
2.2.1 New BMW 1,2, X1, X2



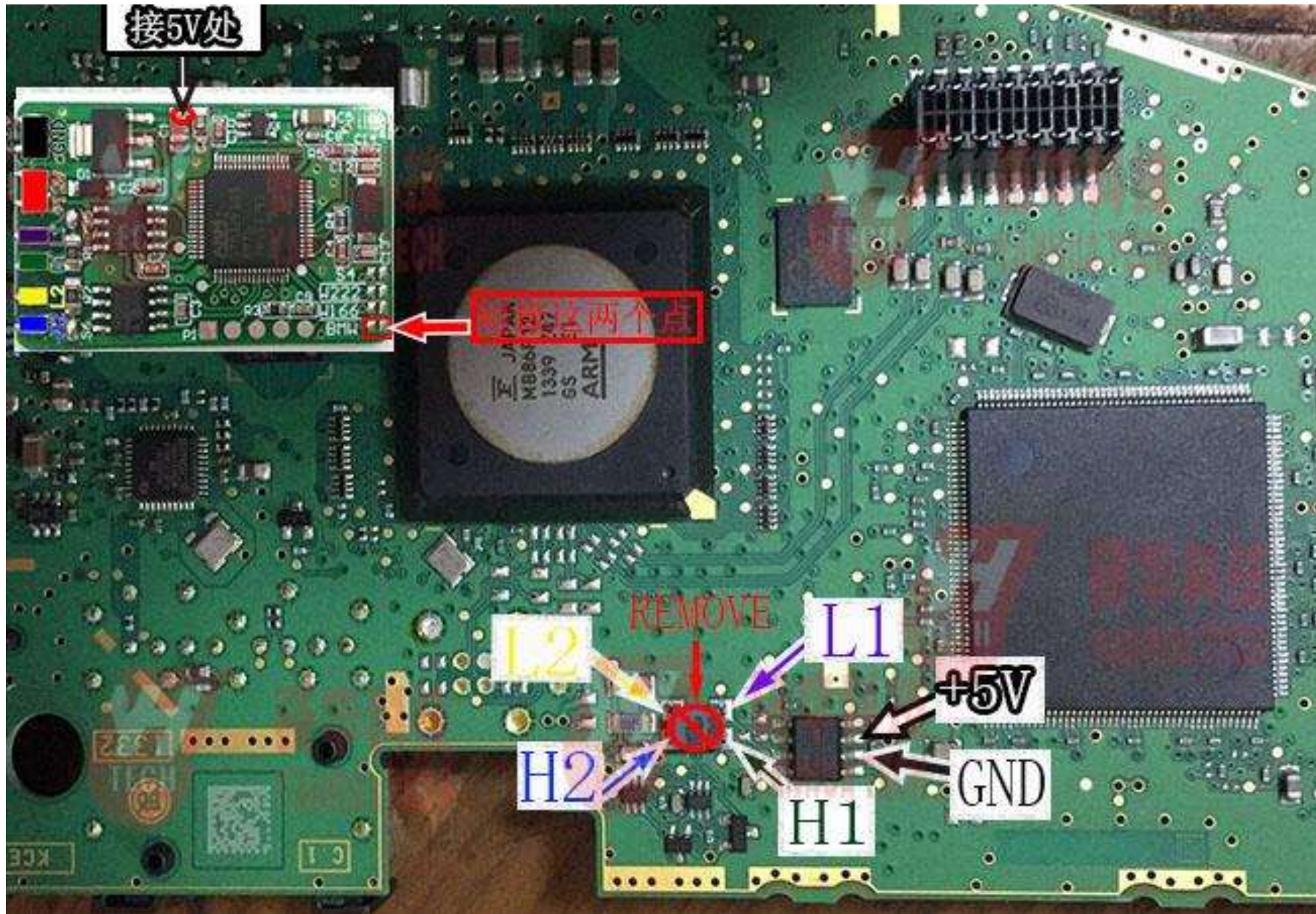
2.3 BMW 3 series F30



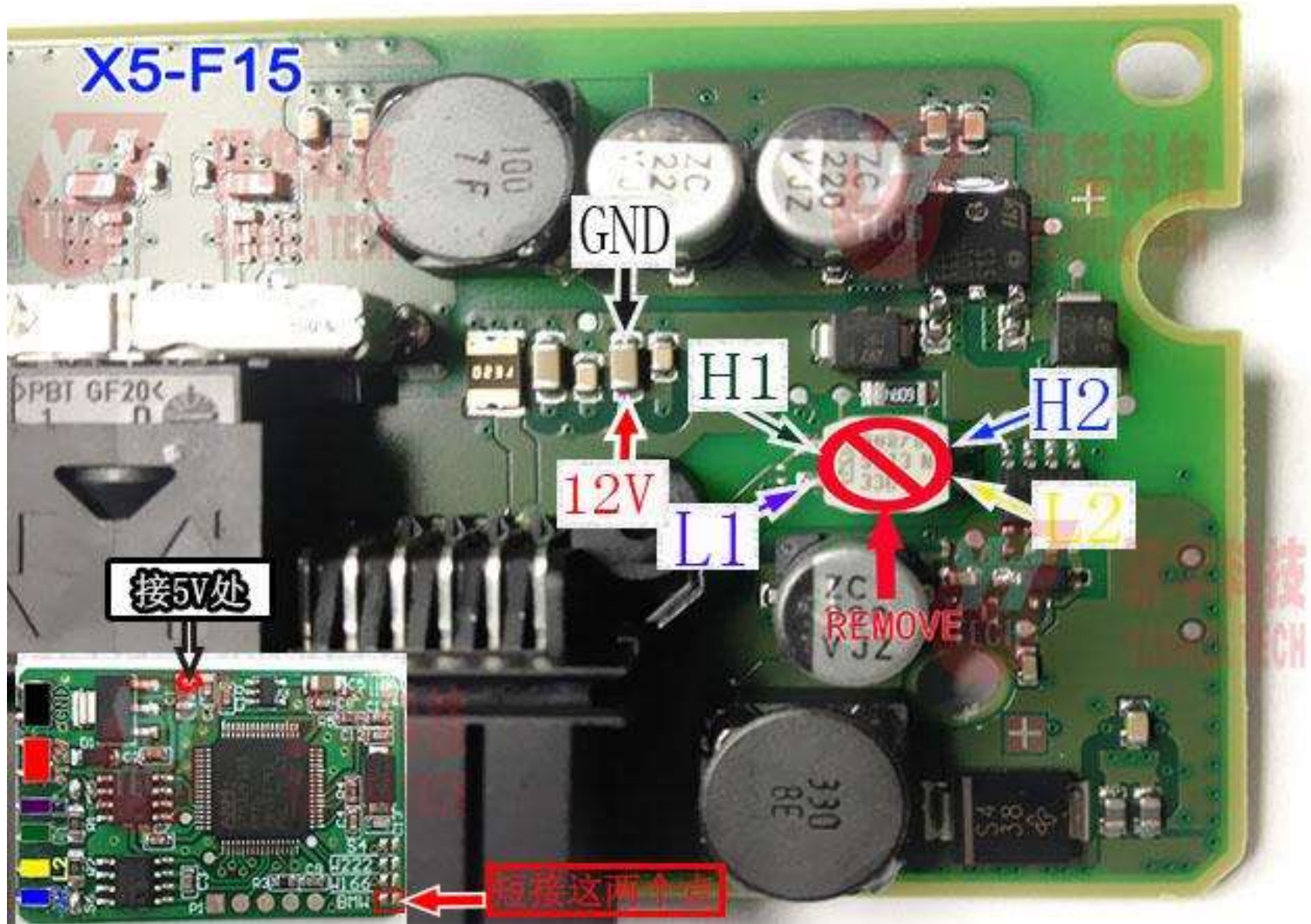
2.4BMW 2013 3GT F30



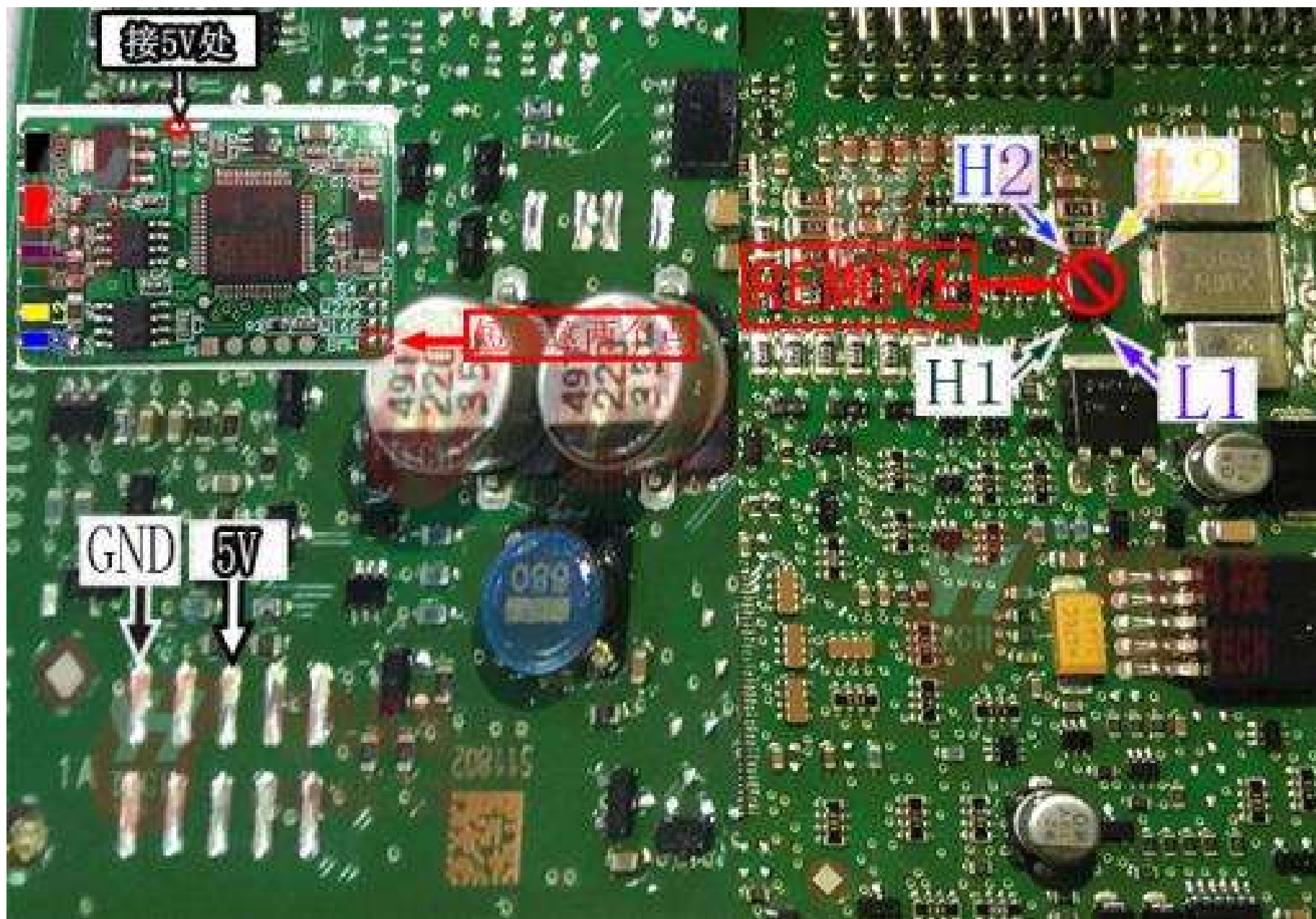
2.5BMW American X5 F15



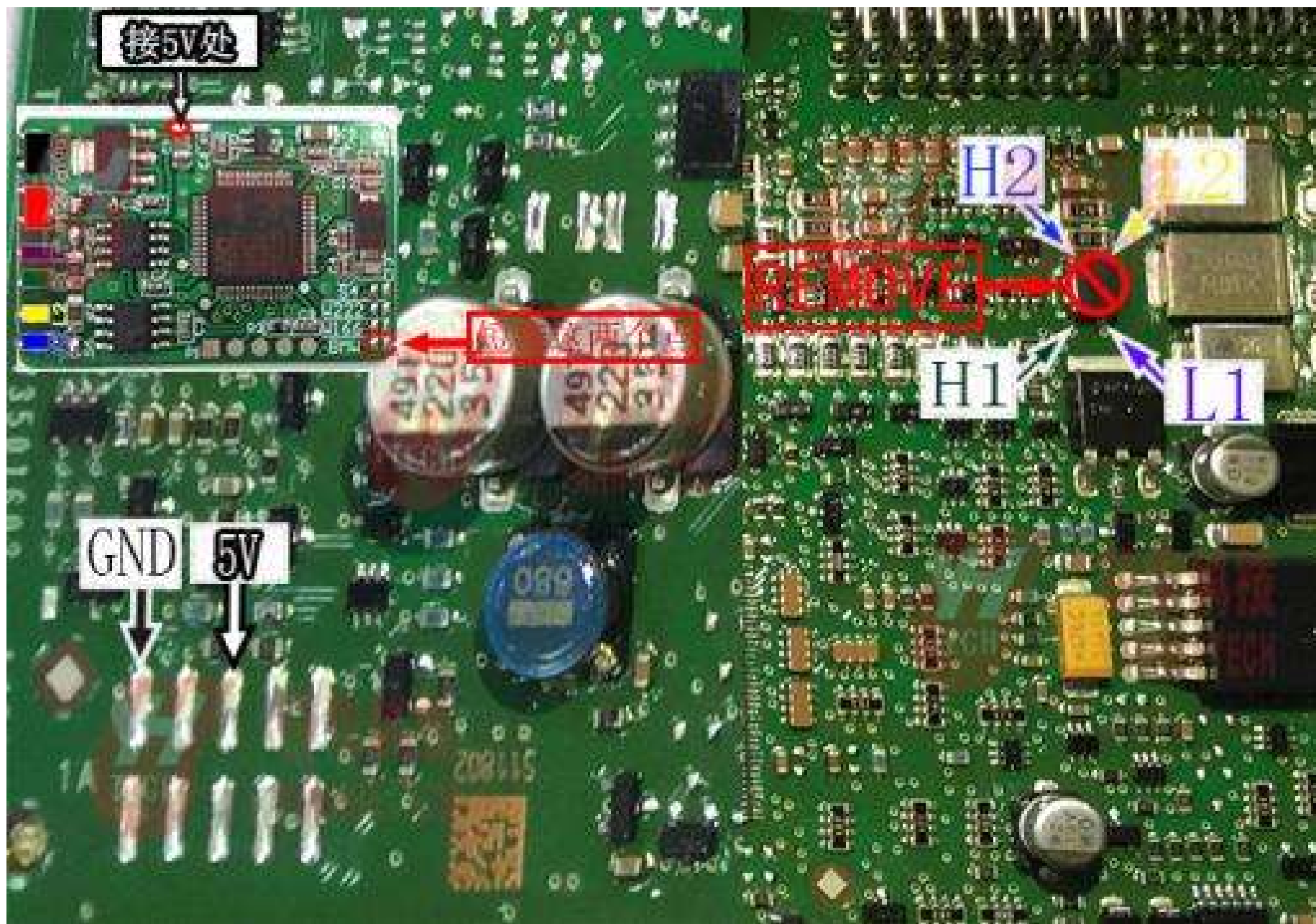
2.6 BMW X5 F15



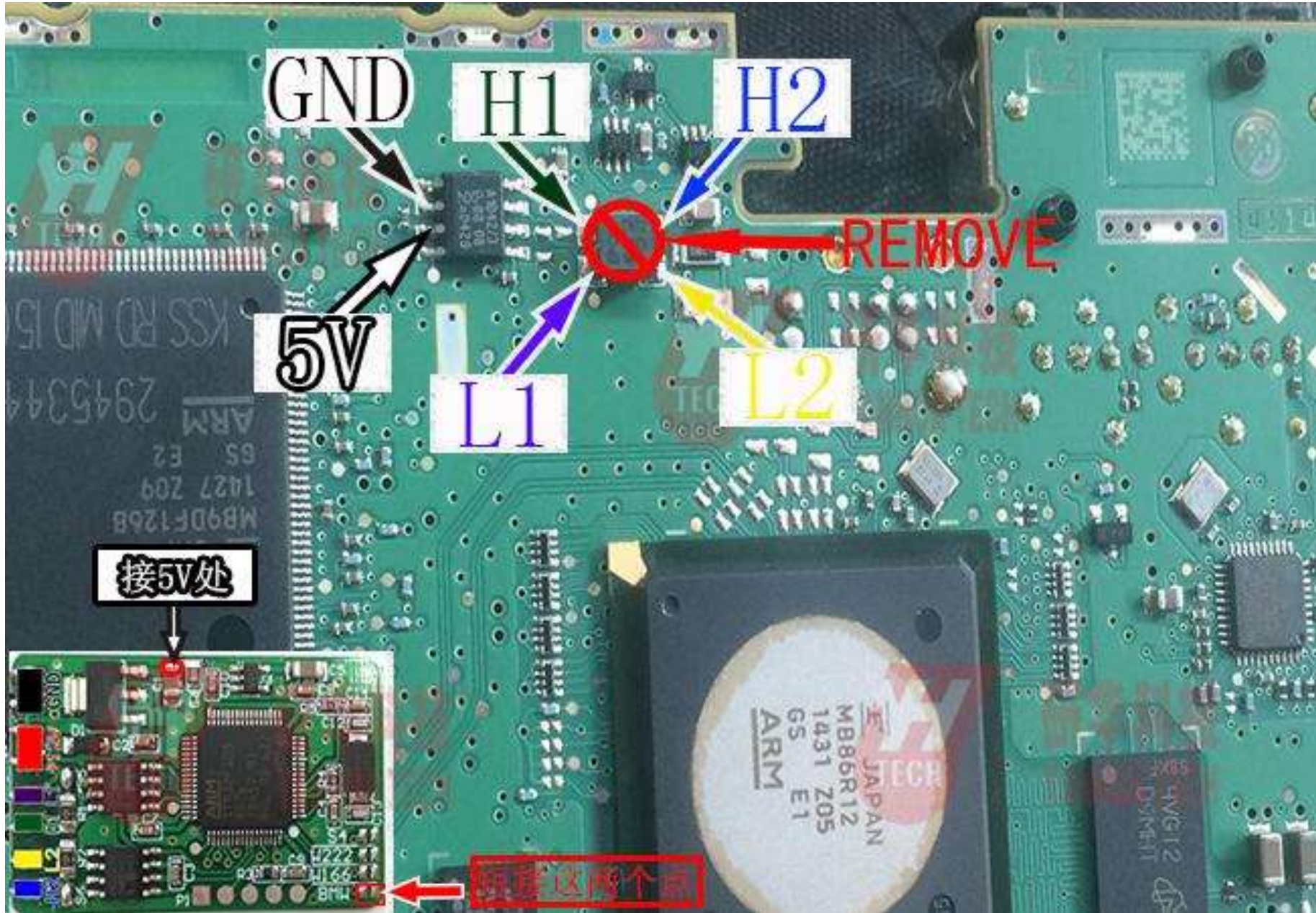
2.7 BMW FEM



2.8 BMW CAS4 (1L15Y/5M48H/1N35H)



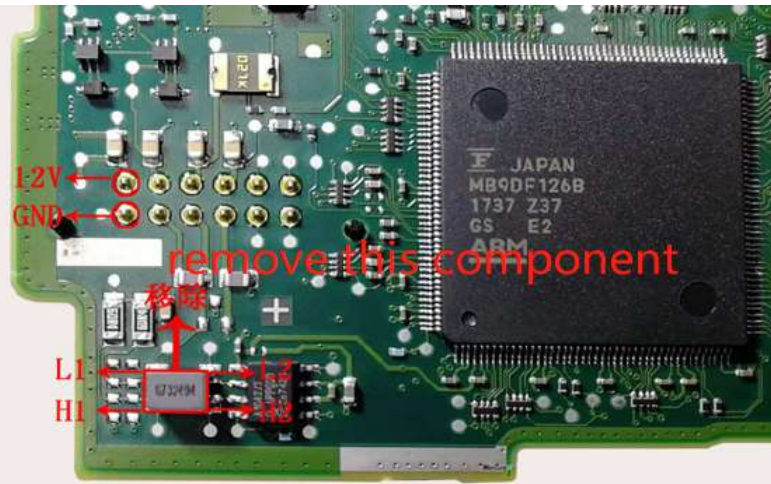
2.9 BMW X3 F25



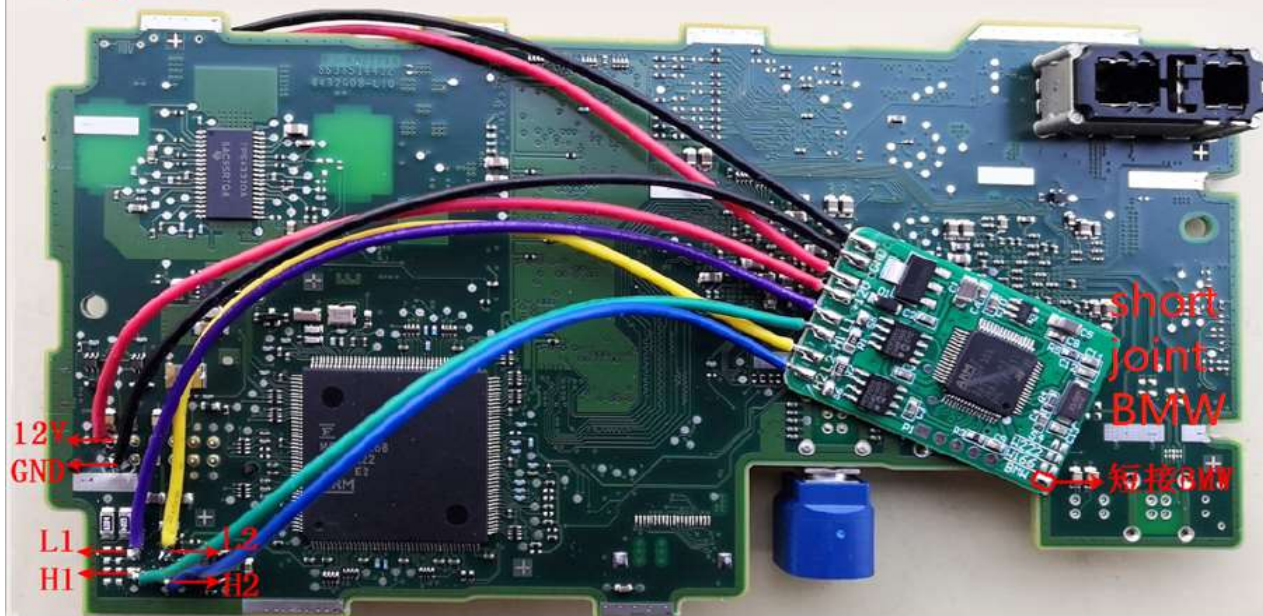
3.0 BMW Gxx

3.0.1 Bosch

图一:



图二:



3.0.2 VDO



GXX VDO dashboard

G底盘VDO仪表过滤器接线图

12V 红

GND 黑

L1 紫
H1 绿

L2 黄
H2 蓝